

Hassle-free
repairs are just
the beginning.

Your journey starts here.

Your Platinum Plus
Membership Booklet



Get the most out of your membership.

In this members book, you'll find an overview of repairs to help more clearly identify the repairs included in your membership.

You will also find several examples of repairs we've recently completed with our national fleet of mobile panel repair vans.

Schmick is the largest network of mobile repair vans in Australia, operating in major capital cities and regional centres.

For your convenience, repairs can be carried out at your home or your place of work. Some conditions apply in terms of 'suitable' location.



An easy process to book a repair.

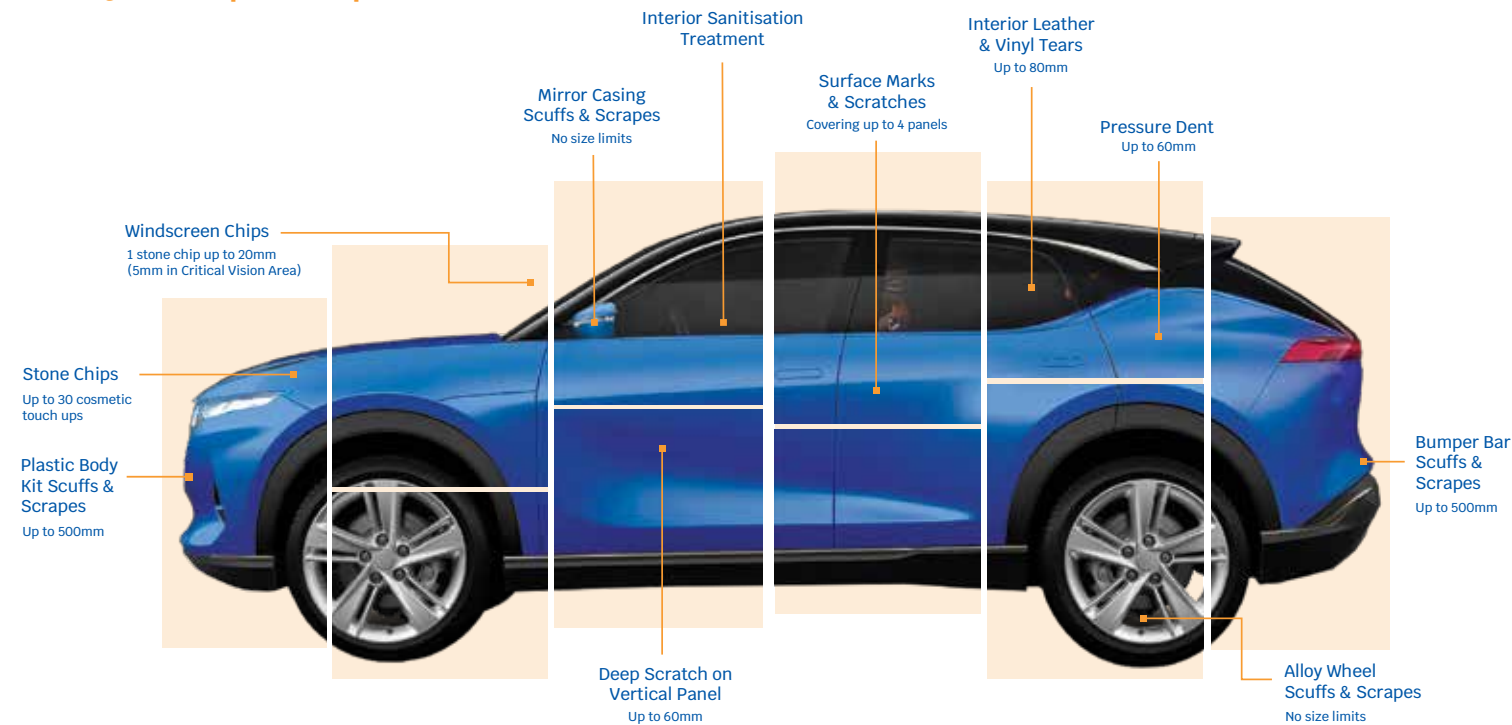
Member exclusive app.

Request a repair in seconds using our member exclusive app available for both Android & Apple.

1. Download the free Schmick app from the Apple or Google Play store
2. Enter membership details
3. Take photos of the damage
4. Submit repair
5. Our friendly staff will be in contact to arrange your repair

* Repair fee for a single repair at time of printing. Subject to change.

Repairs Guide Overview# Only \$50 per repair*



* Repair fee for a single repair at time of printing. Subject to change. Refer to schmickclub.com for repair fee applicable at the time of requesting a repair.

Please refer to the Schmick Scratch & Dent Assist Terms & Conditions for full details (including repair size limits and exclusions) which is available at schmickclub.com. Schmick offers a minor repairs service for a low repair fee for its members. Membership is not a substitute for any type of motor vehicle insurance.

Key Exclusions

Chrome and high polished alloy wheels · Replacement parts · Structural damage · Style line dents · Non painted textured plastic components · Damage on your vehicle prior to joining Schmick · Deep panel scratches on roof, bonnet, tailgate and boot.

Quick, easy and convenient repairs.

Only \$50 per repair*

Request a repair in seconds using our member exclusive app, available for both Android & Apple.

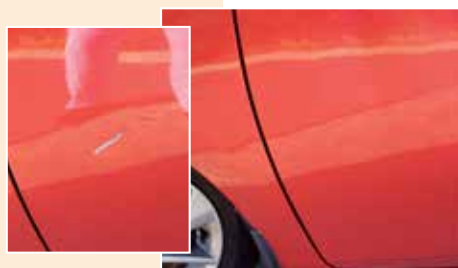
Bumper Bar Scrapes & Scratches

Up to 500mm in length on front and back bumpers



Deep Panel Scratch or Dent with Paint Damage

1 scratch or dent- up to 60mm in length or diameter on a vertical panel (Excludes roof, bonnet, tailgate and boot)



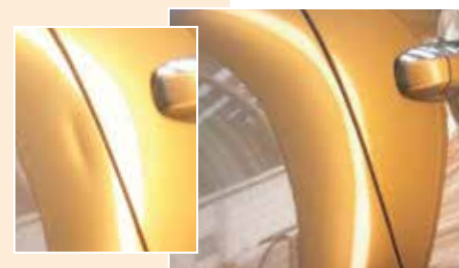
Surface Scratches & Marks

Covering up to 4 painted panels



Pressure Dents

Up to 60mm in diameter on all flat metal panels (Excludes dents on style lines & metal folds)



Alloy Wheel Scrapes - Machine Finished

Scuffs and Scrapes on one alloy wheel - no size limit (Excludes chrome and high polished wheels or damage to a pin stripe)



(machine-finished wheels)

Alloy Wheel Scrapes

Scuffs and Scrapes on one alloy wheel - no size limit (Excludes chrome and high polished wheels or damage to a pin stripe)



(paint-finished wheels)

Side Mirror Scrapes & Scratches

Covering one plastic painted mirror casing - no size limit (Excludes chrome finished casing)



Body Kit Scuffs & Scrapes

Up to 500mm on all painted plastic body kit components (Excludes horizontal surface of boot spoiler)



Please refer to the SchmicK Scratch & Dent Assist Terms & Conditions for full details (including repair size limits and exclusions) which is available at schmicKclub.com. SchmicK offers a minor repairs service for a low repair fee for its members. Membership is not a substitute for any type of motor vehicle insurance.

* Repair fee for a single repair at time of printing. Subject to change.

Quick, easy and convenient repairs.

Only \$50 per repair*

Dent repairs up to 60mm



Quick, easy and convenient repairs.

Only \$50 per repair*

Interior Leather & Vinyl Repairs

Tears up to 80mm in length on seats or armrest



Windscreen Repairs

1 Stone Chip up to 20mm (5mm in Critical Vision Area)



Interior Sanitisation Treatment

Protect your family's health against infectious viruses and bacteria with a Schmick Interior Sanitisation Treatment



Large Repairs

Larger damage repairs that exceed the Membership Program are at the discretion of Schmick. This example exceeds the size limit but was still repaired by a Schmick technician at a member discounted price.



We have the answers.

Frequently asked questions.

1. What is the service area?

The service area is the geographic area where Schmick will travel to do repairs. This is typically the greater metropolitan area of Melbourne, Sydney, Brisbane, Adelaide, Perth, Gold Coast, Sunshine Coast, Hobart, Launceston, Townsville and Cairns. and some larger regional cities.

2. What happens if I move outside the service area?

You simply need to come back into the service area to have a repair done.

3. Does it matter if my car is registered under a business name?

No. Providing it is not used commercially or as a tool of trade. i.e. courier, taxi, tradesman work Ute.

4. How many times can I request a minor repair?

Unlimited during the term of your membership, each minor repair will just cost the current low repair fee.

5. If I have 3 minor repairs done at once, how much will this cost?

Simple, just 3x the current repair fee.

6. How do I request a repair?

There are 3 simple ways to request a repair:

1. Via our Schmick app available from Apple or Google Play store.
2. Visit our website www.schmickclub.com
3. Email photos of the damage to repairs@schmickclub.com and we will call you to arrange the repair.

7. When I request a repair, when do I pay the repair fee(s)?

On completion of the repair work either by VISA or MasterCard.

8. Who determines whether or not a requested repair falls under the program?

Schmick Club will make the final assessment and discuss with you once we have viewed the requested repair.

9. Is there a fee if you call out to find the repair is not covered?

No, the repair fee(s) are only incurred once a repair is completed.

* Repair fee for a single repair at time of printing. Subject to change.

Please refer to the Schmick Scratch & Dent Assist Terms & Conditions for full details (including repair size limits and exclusions) which is available at schmickclub.com. Schmick offers a minor repairs service for a low repair fee for its members. Membership is not a substitute for any type of motor vehicle insurance.

Quick, easy and
convenient repairs.

On your own schedule.

Establishing a suitable workspace for your repairs.

For a Schmick technician to attend your home or office, we'll need the following requirements to ensure we're able to carry out a repair for you:

1. Access to power within 20 meters
2. Garage, carport or private driveway
3. No vehicle parked directly in front, beside or behind your vehicle
4. Minimum 3 meters clear beside the vehicles damaged area.

Schmick are unable to complete repairs in the following locations:

Schmick are unable to complete paint repairs for the following locations:

1. Undercover car parks or ground level body corporate car parks
2. On street parking
3. Wash bays or detailing bays

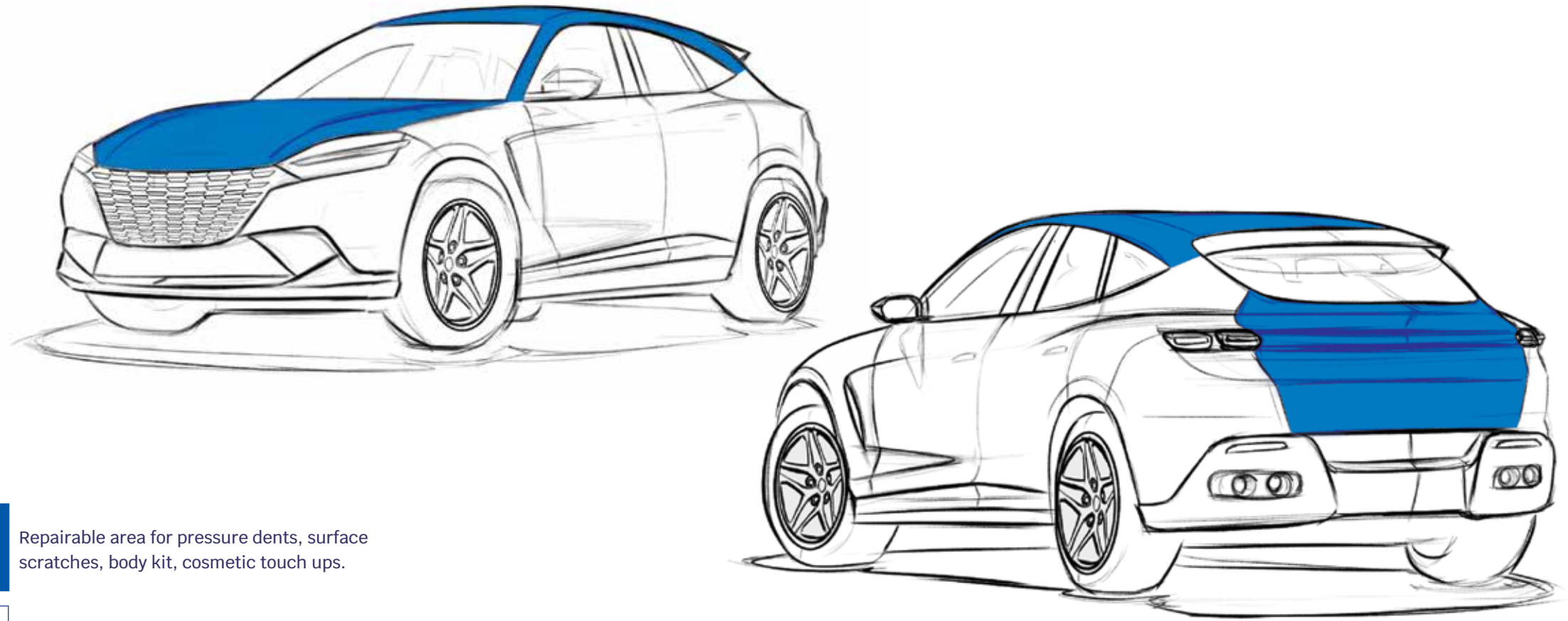
Bookings can be made between Monday and Friday, excluding public holidays. If you do not have a suitable workspace, we would suggest trying to arrange a location with a friend or family member.



It's like nothing ever happened.

Reverse scratch & dent.

Simply identify which panels on your vehicle are repairable.



Repairable area for pressure dents, surface scratches, body kit, cosmetic touch ups.

Repairable area deep scratches, dents, surface scratches, body kit, cosmetic touch ups, side mirrors and repairable alloy wheels.

Key Exclusions

Chrome and high polished alloy wheels · Replacement parts · Structural damage · Style line dents · Non painted textured plastic components · Damage on your vehicle prior to joining Schmick · Deep panel scratches on roof, bonnet, tailgate and boot.



Schmick[™]
Scratch & Dent Assist

schmickclub.com 1300 567 567

Your Platinum Plus Membership